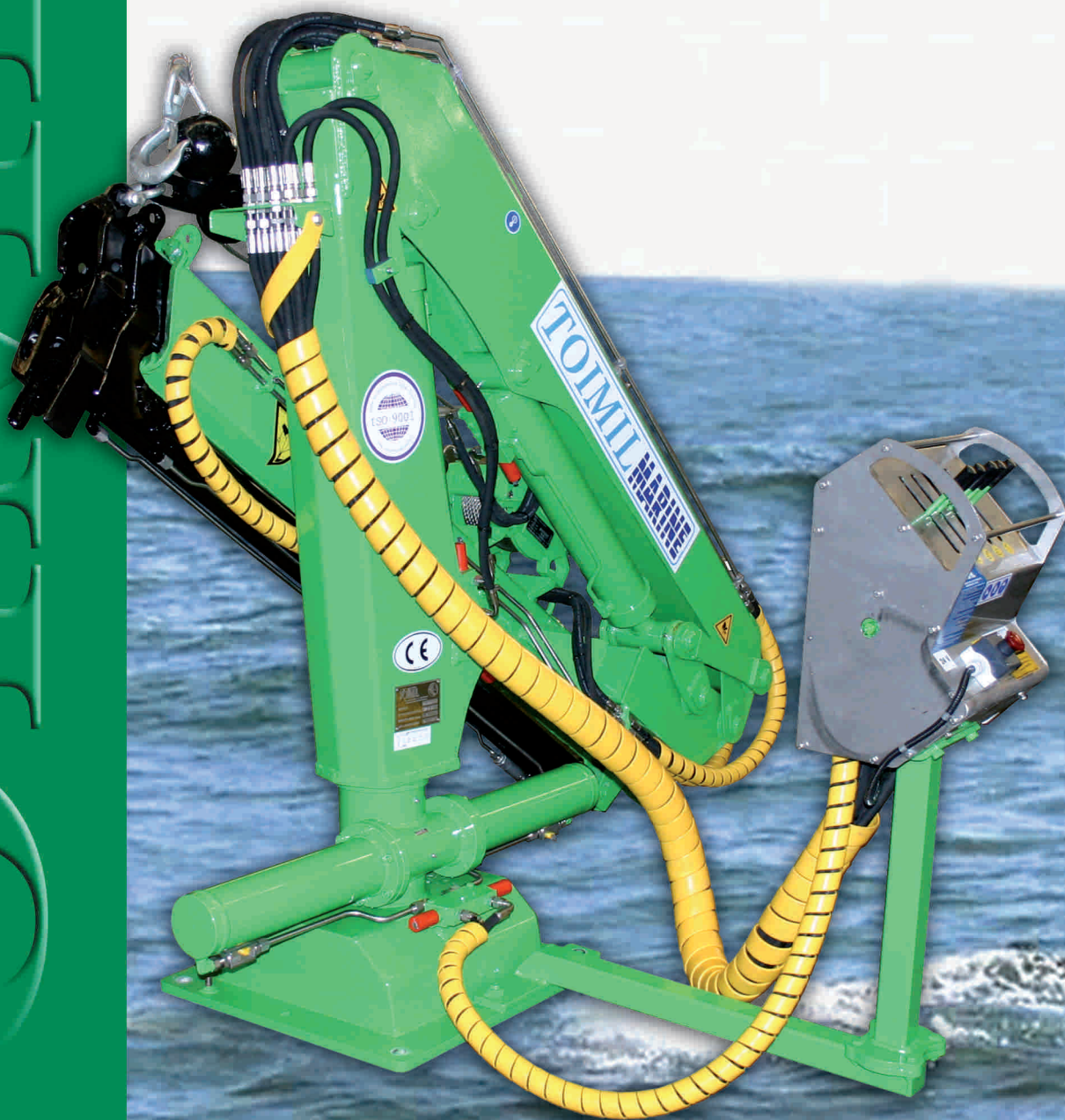


TOIMIL 045M

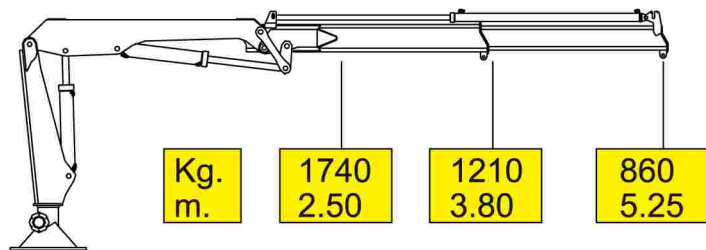


MARINE CRANES

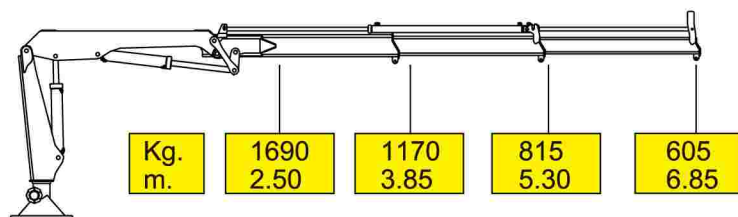
TOIMIL

DIAGRAMA DE CARGAS LOAD DIAGRAM

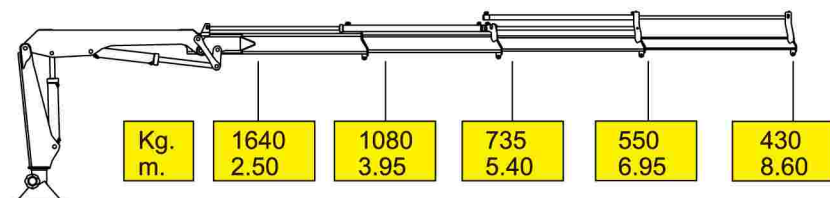
045 M/1



045 M/2



045 M/3



DOUBLE CROSS CHROME
PLATING ON ALL BARRELS



STAINLESS STEEL
FITTINGS ON ALL HOSES

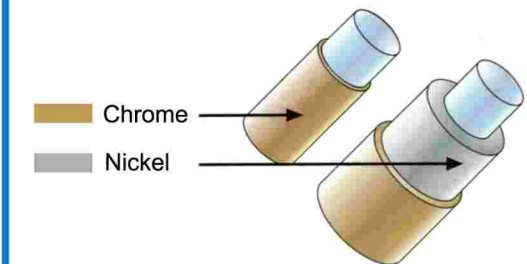
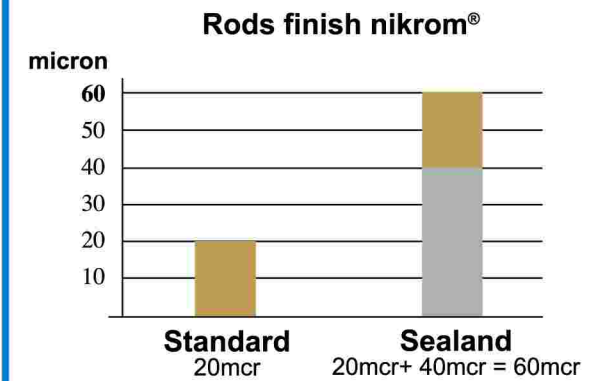


- Limitador de momento
- Distribuidor de cinco elementos
- Cilindros extensión independientes
- Válvulas pilotadas
- Norma del proyecto: EN15018
- Tipo de ensayo a la fatiga: B3
- Sprint Generation System (SGS)
- Electronic Black Box (EBB) only Radio
- Movimiento Suave de Descenso (SDD)

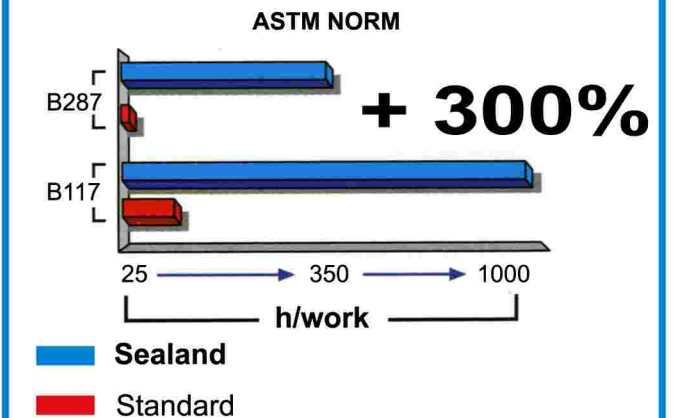


- Load limiting device
- Distributor five elements
- Independent extension cylinders
- Flanged valves
- Design in accordance with EN15018
- Fatigue test classification: B3
- Sprint Generation System (SGS)
- Electronic Black Box (EBB) only Radio
- Soft Descend Drive (SDD)

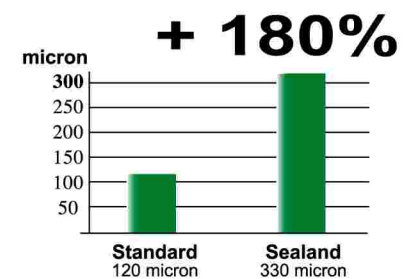
DOUBLE CROSS CHROME PLATING,
60 MICRONS
THICK ON RODS IN ALL CYLINDERS



Corrosion residence in neutral
salty fog - Class 10



PAINTING: FIRST COAT WITH
EPOXIDAL BI-COMPONENT, FINAL
DOUBLE COAT WITH POLYURETHANE
BI-COMPONENT ENAMEL
(250-330 MICRONS, 1+1+2 LAYERS)



Radio remote
control system
with pressure
compensated
valve block
(Danfoss)

MARINE CRANES

MARINE CRANES

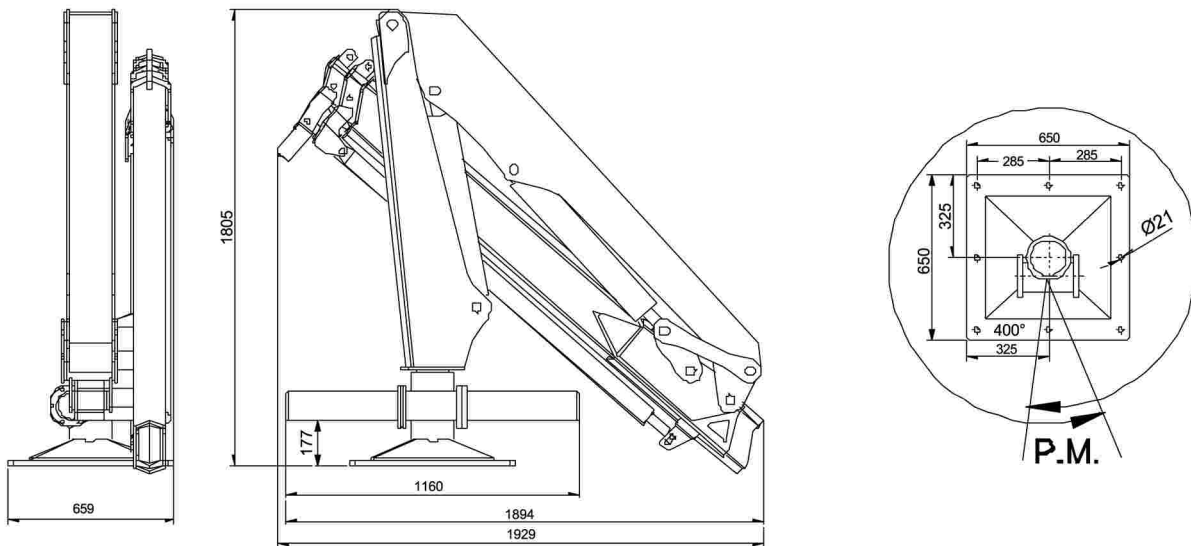
DATOS TÉCNICOS

045 M

Momento de elevación max.- Max lifting moment	45 kNm
Alcance máximo horizontal - Max horizontal reach	045 M/1 - 5520 mm
	045 M/2 - 6850 mm
	045 M/3 - 8600 mm
Inclinación máxima vertical - Max vertical reach	86°
Ángulo de rotación - Slewing angle	400°
Par de rotación - Slewing torque	6.6 kNm
Presión de trabajo - Working pressure	24 MPa
Caudal máximo al distribuidor - Max oil flow	20l/min
Peso grúa - Crane weight	045 M/1 - 650 Kg
	045 M/2 - 725 Kg
	045 M/3 - 785 Kg

ACCESORIOS - ACCESSORIES:

- Prolongas manuales - Manual extensions
- Cabrestante - Winch
- Activación elementos suplementarios - Suplementari element activation
- Control remoto - Remote control



Hnos. TOIMIL GARCIA, S.L.

Equipos Forestales

GRUAS HIDRAULICAS

Forestales - Industriales - Marinas

Teléfono: (+34) 986 79 40 44 Fax: (+34) 986 79 40 47

Móvil: (+34) 609 08 90 06

36512 PRADO - LALIN - PONTEVEDRA (España)

E-mail: toimil@toimilgruas.com

www.toimilgruas.com



Distribuidor:
Distributor: