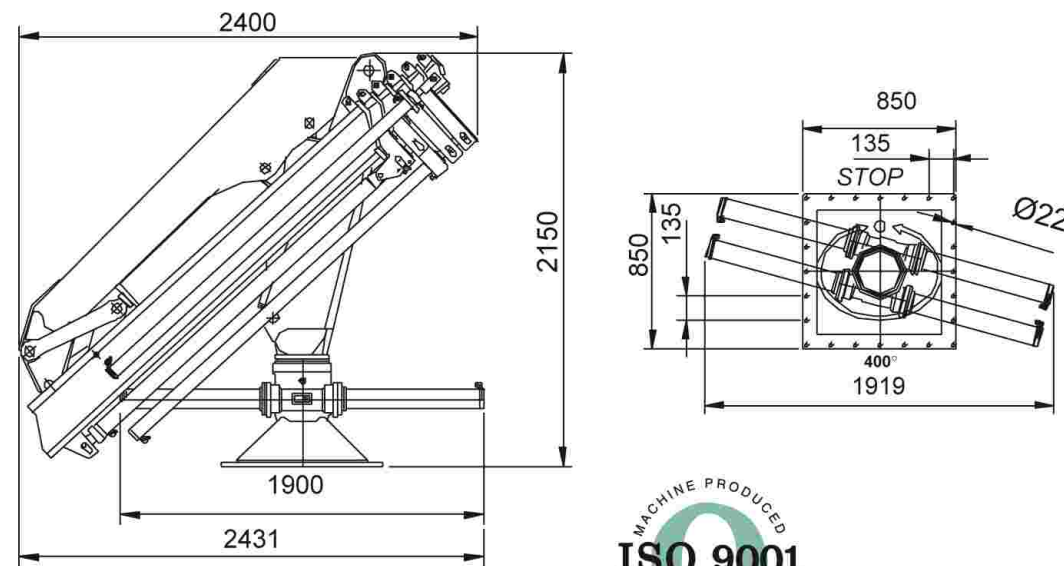


DATOS TÉCNICOS 12500M

Momento de elevación max. - Max lifting moment	117.6 kNm
Alcance máximo horizontal - Max horizontal reach	12500M/1 - 6000 mm
	12500M/2 - 8010 mm
	12500M/3 - 10100 mm
	12500M/4 - 12200 mm
	12500M/5 - 14310 mm
Inclinación máxima vertical - Max vertical reach	78°
Ángulo de rotación - Slewing angle	400°
Par de rotación - Slewing torque	19 kNm
Presión de trabajo - Working pressure	23 MPa
Caudal máximo al distribuidor - Max oil flow	30 L/min
Peso grúa - Crane weight	12500M/1 - 1520 kg
	12500M/2 - 1650 kg
	12500M/3 - 1760 kg
	12500M/4 - 1850 kg
	12500M/5 - 1930 kg

ACCESORIOS - ACCESSORIES:

- Prolongas manuales - Manual extensions
- Cabrestante - Winch
- Activación elementos suplementarios - Supplementar element activation
- Control remoto - Remote control



Hnos. TOIMIL GARCIA, S.L.

Equipos Forestales

GRUAS HIDRAULICAS

Forestales - Industriales - Marinas

Teléfono: (+34) 986 79 40 44 Fax: (+34) 986 79 40 47
Móvil: (+34) 609 08 90 06

36512 PRADO - LALIN - PONTEVEDRA (España)

E-mail: toimil@toimilgruas.com
www.toimilgruas.com

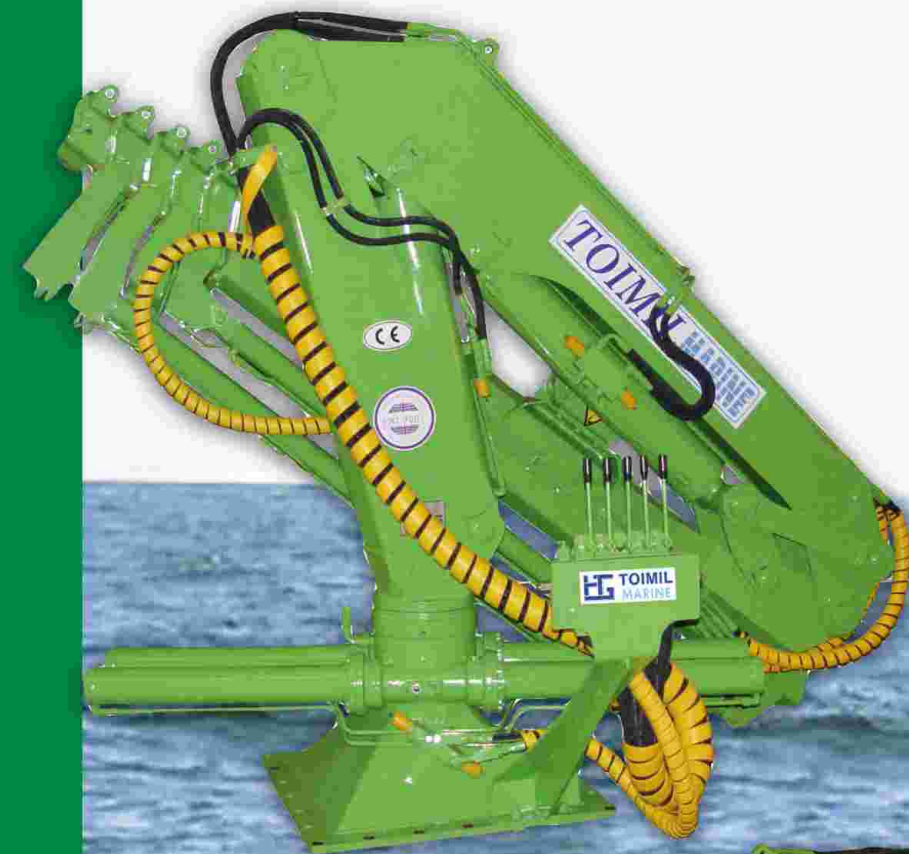
Distribuidor:
Distributor:



819.00.0000.00-03/06/1000

En beneficio del desarrollo técnico, TOIMIL se reserva el derecho de realizar las modificaciones que considere oportunas, sin previo aviso.
On the interests of technical development, TOIMIL reserves the right to make appropriate changes without prior warning.

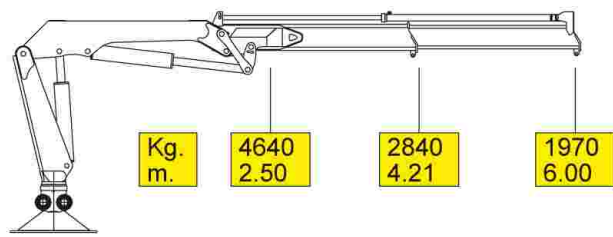
TOIMIL T-12500M



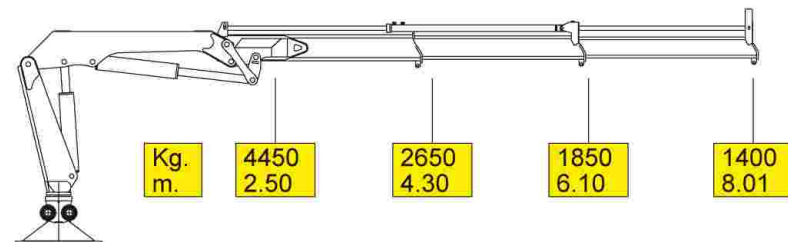
MARINE CRANES

DIAGRAMA DE CARGAS LOAD DIAGRAM

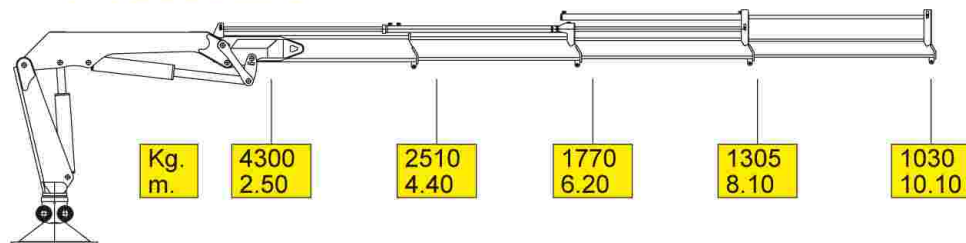
T-12500M/1



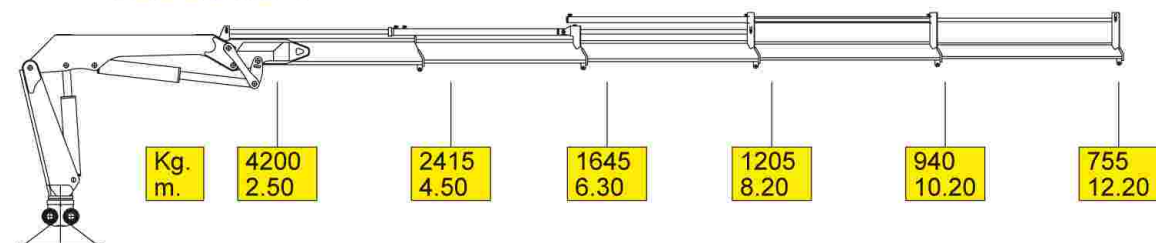
T-12500M/2



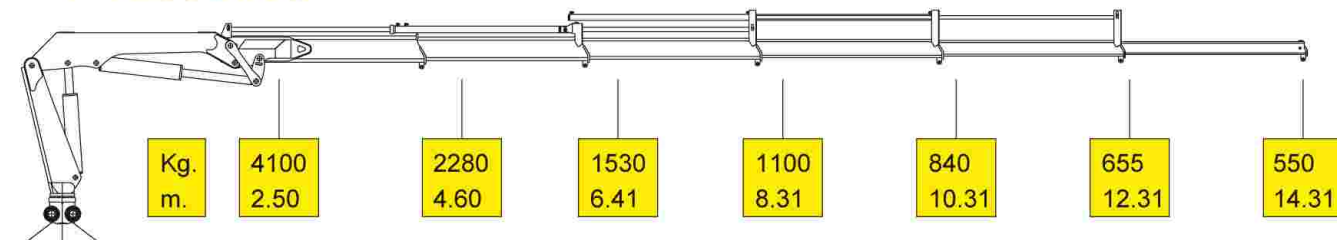
T-12500M/3



T-12500M/4



T-12500M/5



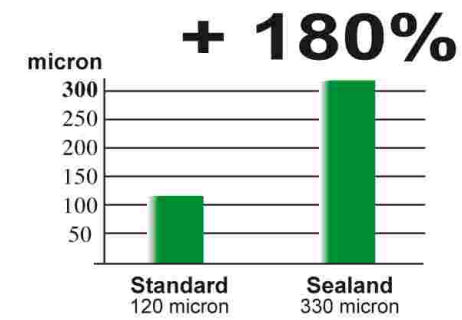
DOUBLE CROSS CHROME
PLATING ON ALL BARRELS



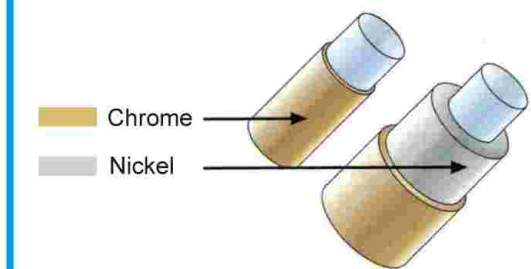
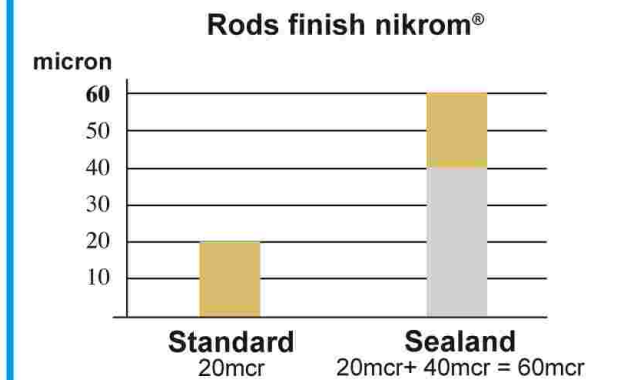
STAINLESS STEEL
FITTINGS ON ALL HOSES



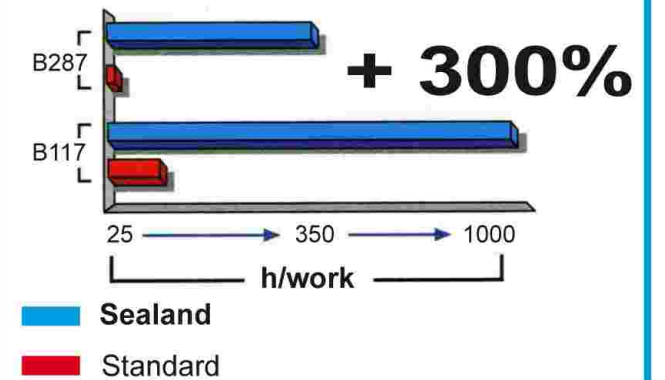
PAINTING: FIRST
COAT WITH
EPOXIDAL BI-
COMPONENT, FINAL
DOUBLE COAT WITH
POLYURETHANE
BI-COMPONENT
ENAMEL
(250-330 MICRONS,
1+1+2 LAYERS)



DOUBLE CROSS CHROME PLATING,
60 MICRONS
THICK ON RODS IN ALL CYLINDERS



Corrosion residence in neutral
salty fog - Class 10
ASTM NORM



- Limitador de momento
- Distribuidor de cinco elementos
- Cilindros extensión independientes
- Válvulas pilotadas
- Norma del proyecto: EN15018
- Tipo de ensayo a la fatiga: B3
- Sprint Generation System (SGS)
- Electronic Black Box (EBB) only Radio
- Movimiento Suave de Descenso (SDD)



- Load limiting device
- Distributor five elements
- Independent extension cylinders
- Flanged valves
- Design in accordance with EN15018
- Fatigue test classification: B3
- Sprint Generation System (SGS)
- Electronic Black Box (EBB) only Radio
- Soft Descend Drive (SDD)



Radio remote
control system
with pressure
compensated
valve block
(Danfoss)

MARINE CRANES

MARINE CRANES