

TOIMIL 50500



MARINE CRANES

TOIMIL

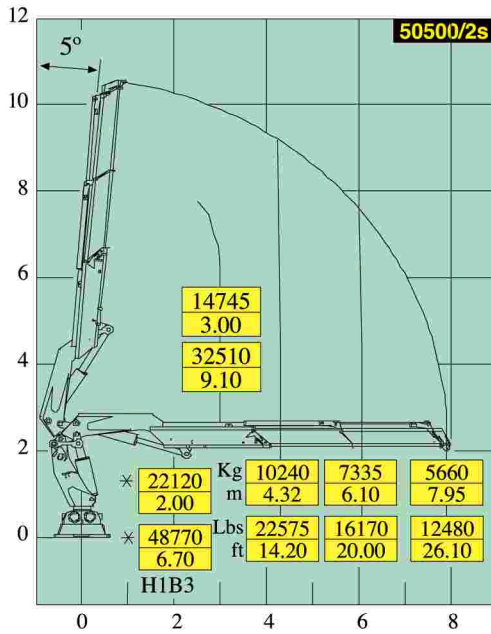
DOUBLE CROSS CHROME PLATING ON ALL BARRELS



STAINLESS STEEL FITTINGS ON ALL HOSES



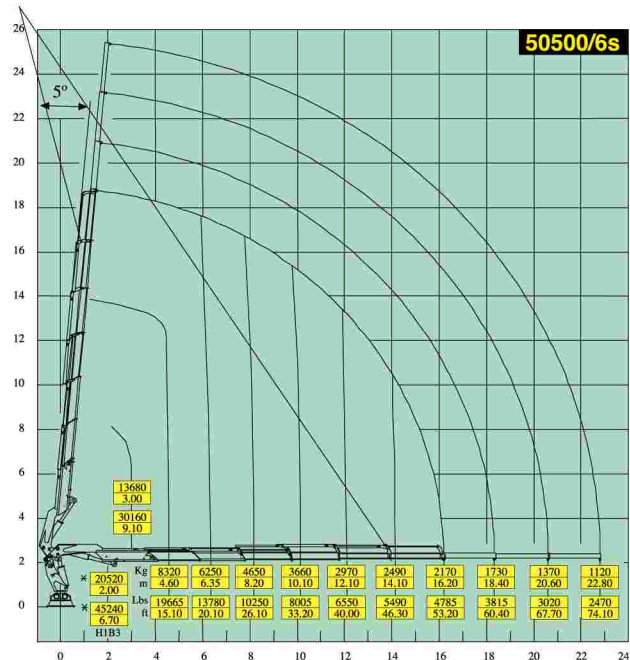
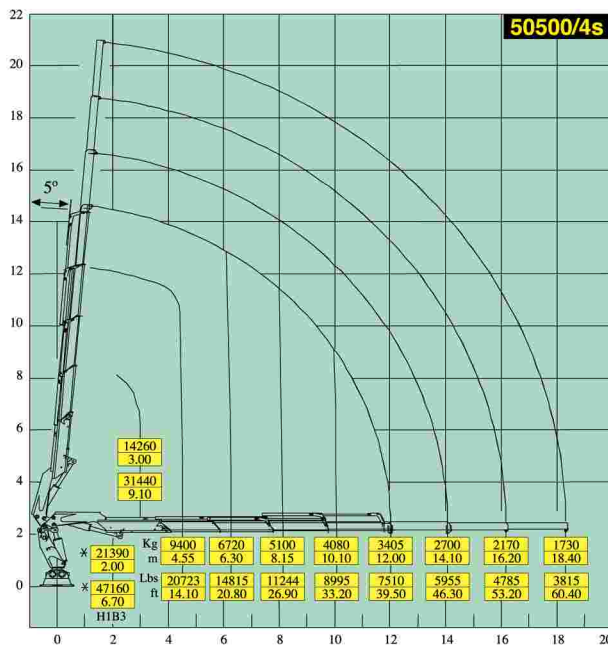
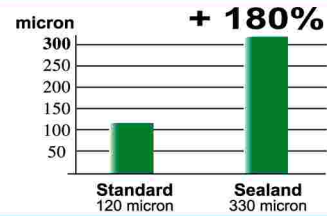
- Limitador de momento
- Distribuidor de cinco elementos
- Cilindros extensión independientes
- Válvulas pilotadas
- Norma del proyecto: EN15018
- Tipo de ensayo a la fatiga: B3
- Sprint Generation System (SGS)
- Electronic Black Box (EBB) only Radio
- Movimiento Suave de Descenso (SDD)

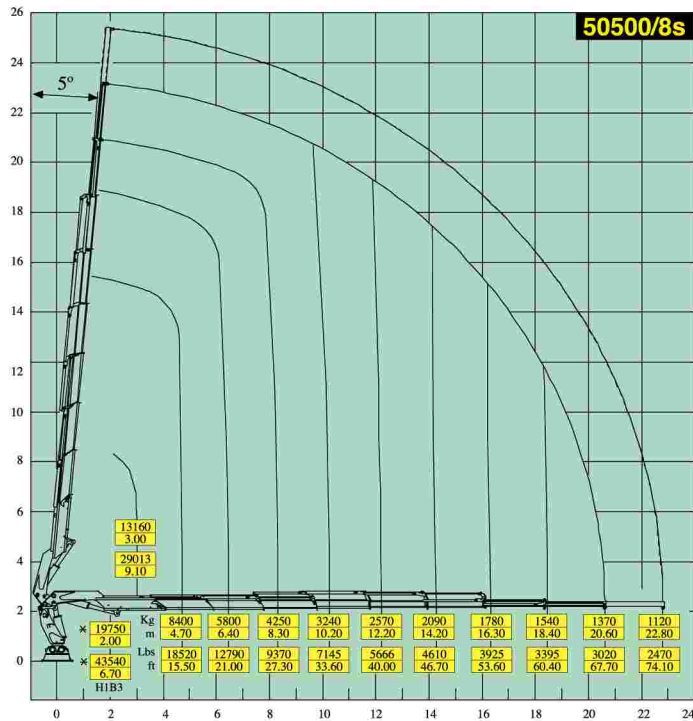


PAINTING: FIRST COAT WITH EPOXIDAL BI-COMPONENT, FINAL DOUBLE COAT WITH POLYURETHANE BI-COMPONENT ENAMEL (250-330 MICRONS, 1+1+2 LAYERS)



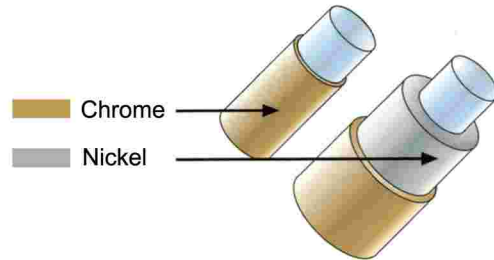
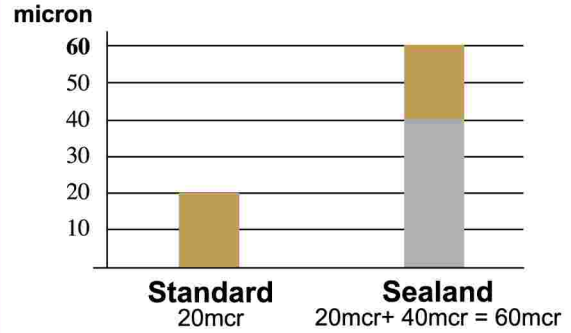
- Load limiting device
- Distributor five elements
- Independent extension cylinders
- Flanged valves
- Design in accordance with EN15018
- Fatigue test classification: B3
- Sprint Generation System (SGS)
- Electronic Black Box (EBB) only Radio
- Soft Descend Drive (SDD)





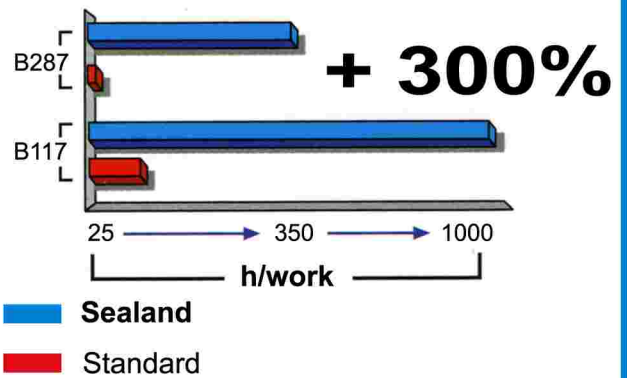
**DOUBLE CROSS CHROME PLATING,
60 MICRONS
THICK ON RODS IN ALL CYLINDERS**

Rods finish nikrom®



Corrosion residence in neutral salty fog - Class 10

ASTM NORM



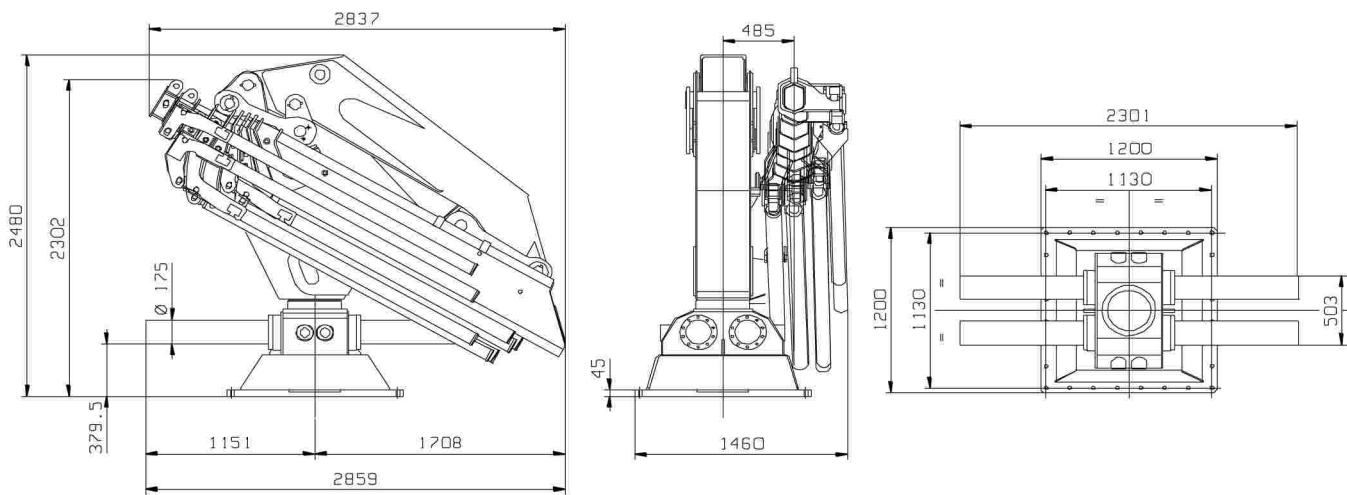
Radio remote control system with pressure compensated valve block (Danfoss)

MARINE CRANES

DATOS TÉCNICOS - TECHNICAL DATA

50500		2S	3S	4S	5S	6S	7S	8S
Momento de elevación máximo. Max lifting moment.	kNm LbsFt	46,5 Txm						
Alcance hidráulico horizontal. Hydraulic horizontal reach.	m.	7,95	10,00	12,00	14,10	16,20	18,40	20,60
Angulo de giro. -Slewing angle.	°	410°						
Velocidad de giro. -Slewing speed.	s (410°)	30/ s						
Inclinación máxima a plena carga. Max slope viable at full capacity.	°	4°						
Presión de trabajo. Working pressure.	Bar	320 Bar						
Caudal máximo al distribuidor. Max oil flow.	L/min	80 L/min.						
Capacidad depósito de aceite. Oil tank capacity.	Litros	210 L						
Peso de la grúa. Crane weight.	Kg	4030	4280	4530	4750	4930	5120	5280

DIMENSIONES GENERALES / GENERAL DIMENSIONS



Hnos. TOIMIL GARCIA, S.L.

Equipos Forestales

GRUAS HIDRAULICAS

Forestales - Industriales - Marinas

Teléfono: (+34) 986 79 40 44 Fax: (+34) 986 79 40 47

Móvil: (+34) 609 08 90 06

36512 PRADO - LALIN - PONTEVEDRA (España)

E-mail: toimil@toimilgruas.com

www.toimilgruas.com



Distribuidor:
Distributor:

En beneficio del desarrollo técnico, TOIMIL se reserva el derecho de realizar las modificaciones que considere oportunas, sin previo aviso. On the interests of technical development, TOIMIL reserves the right to make appropriate changes without prior warning.

819.10.0003.00-03/06/2000