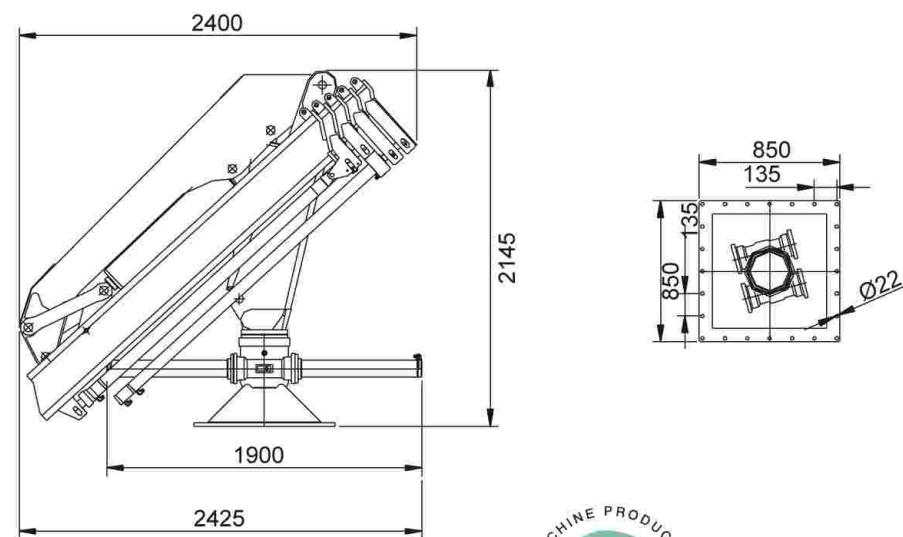


TOIMIL T-10500M

DATOS TÉCNICOS		10500M
Momento de elevacion max.- Max lifting moment	102.9 kNm	
Alcance maximo horizontal - Max horizontal reach	10500M/1 - 6000 mm	
	10500M/2 - 8000 mm	
	10500M/3 - 10050 mm	
	10500M/4 - 12150 mm	
Inclinacion maxima vertical - Max vertical reach	78°	
Angulo de rotacion - Slewing angle	400°	
Par de rotacion - Slewing torque	19 kNm	
Presion de trabajo - Working pressure	21 MPa	
Caudal maximo al distribuidor - Max oil flow	30l/min	
Peso grua - Crane weight	10500M/1 - 1350Kg	
	10500M/2 - 1460Kg	
	10500M/3 - 1560Kg	
	10500M/4 - 1650Kg	
ACCESORIOS - ACCESSORIES:		
-Prolongas manuales - Manual extensions		
-Cabrestante - Winch		
-Activacion elementos suplementarios - Suplementari elemet activation		
-Control remoto - Remote control		



Hnos. TOIMIL GARCIA, S.L.

Equipos Forestales

GRUAS HIDRAULICAS

Forestales - Industriales - Marinas

Teléfono: (+34) 986 79 40 44 Fax: (+34) 986 79 40 47

Móvil: (+34) 609 08 90 06

36512 PRADO - LALIN - PONTEVEDRA (España)

E-mail: toimil@toimilgruas.com

www.toimilgruas.com

Distribuidor:
Distributor:

En beneficio del desarrollo técnico, TOIMIL se reserva el derecho de realizar las modificaciones que considere oportunas, sin previo aviso.
On the interests of technical development, TOIMIL reserves the right to make appropriate changes without prior warning.

819.00.0003.00-03/06/1000

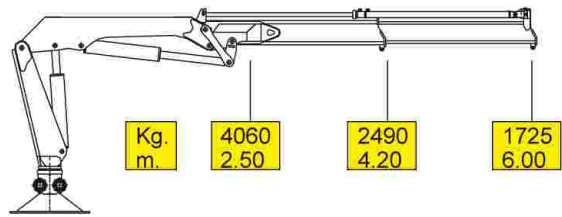
TOIMIL



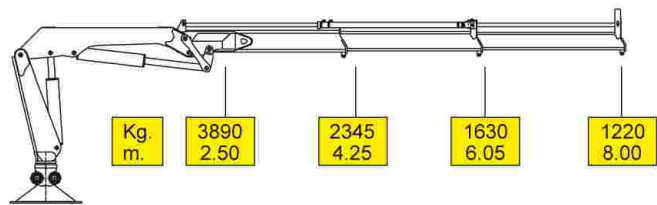
MARINE CRANES

DIAGRAMA DE CARGAS LOAD DIAGRAM

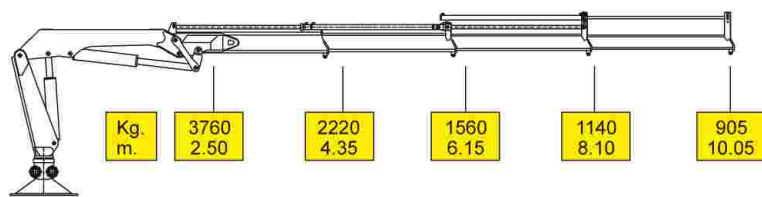
T-10500M/1



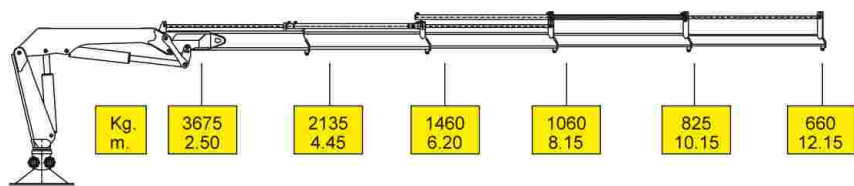
T-10500M/2



T-10500M/3



T-10500M/4



**DOUBLE CROSS CHROME
PLATING ON ALL BARRELS**



**STAINLESS STEEL
FITTINGS ON ALL HOSES**

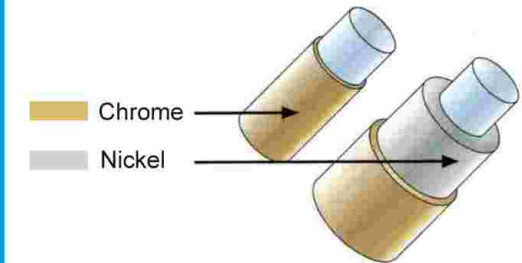
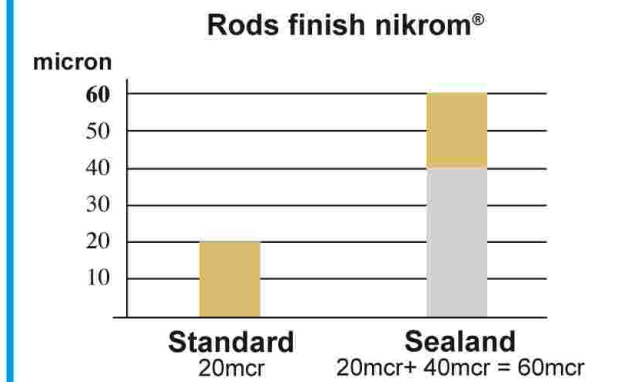


- Limitador de momento
- Distribuidor de cinco elementos
- Cilindros extensión independientes
- Válvulas pilotadas
- Norma del proyecto: EN15018
- Tipo de ensayo a la fatiga: B3
- Sprint Generation System (SGS)
- Electronic Black Box (EBB) only Radio
- Movimiento Suave de Descenso (SDD)

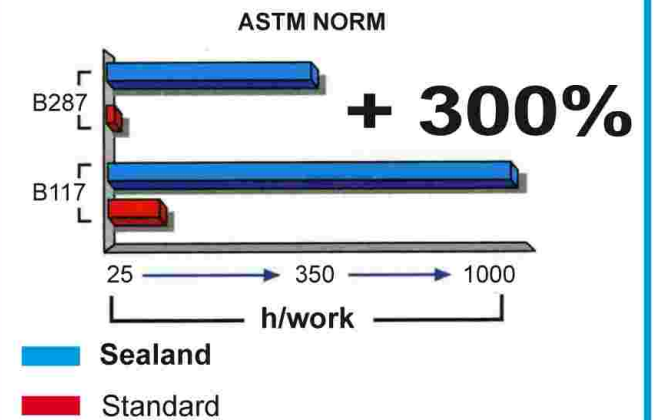


- Load limiting device
- Distributor five elements
- Independent extension cylinders
- Flanged valves
- Design in accordance with EN15018
- Fatigue test classification: B3
- Sprint Generation System (SGS)
- Electronic Black Box (EBB) only Radio
- Soft Descend Drive (SDD)

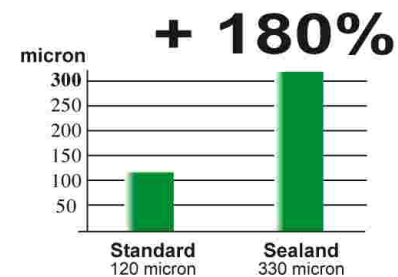
**DOUBLE CROSS CHROME PLATING,
60 MICRONS
THICK ON RODS IN ALL CYLINDERS**



Corrosion residence in neutral
salty fog - Class 10



**PAINTING: FIRST COAT WITH
EPOXIDAL BI-COMPONENT, FINAL
DOUBLE COAT WITH POLYURETHANE
BI-COMPONENT ENAMEL
(250-330 MICRONS, 1+1+2 LAYERS)**



Radio remote
control system
with pressure
compensated
valve block
(Danfoss)

MARINE CRANES

MARINE CRANES